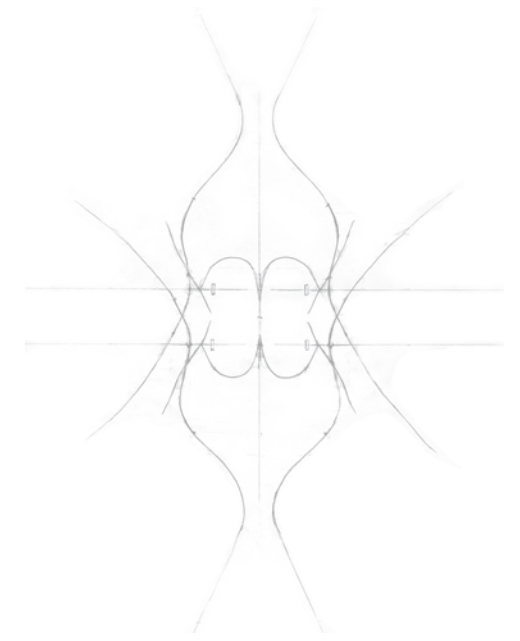
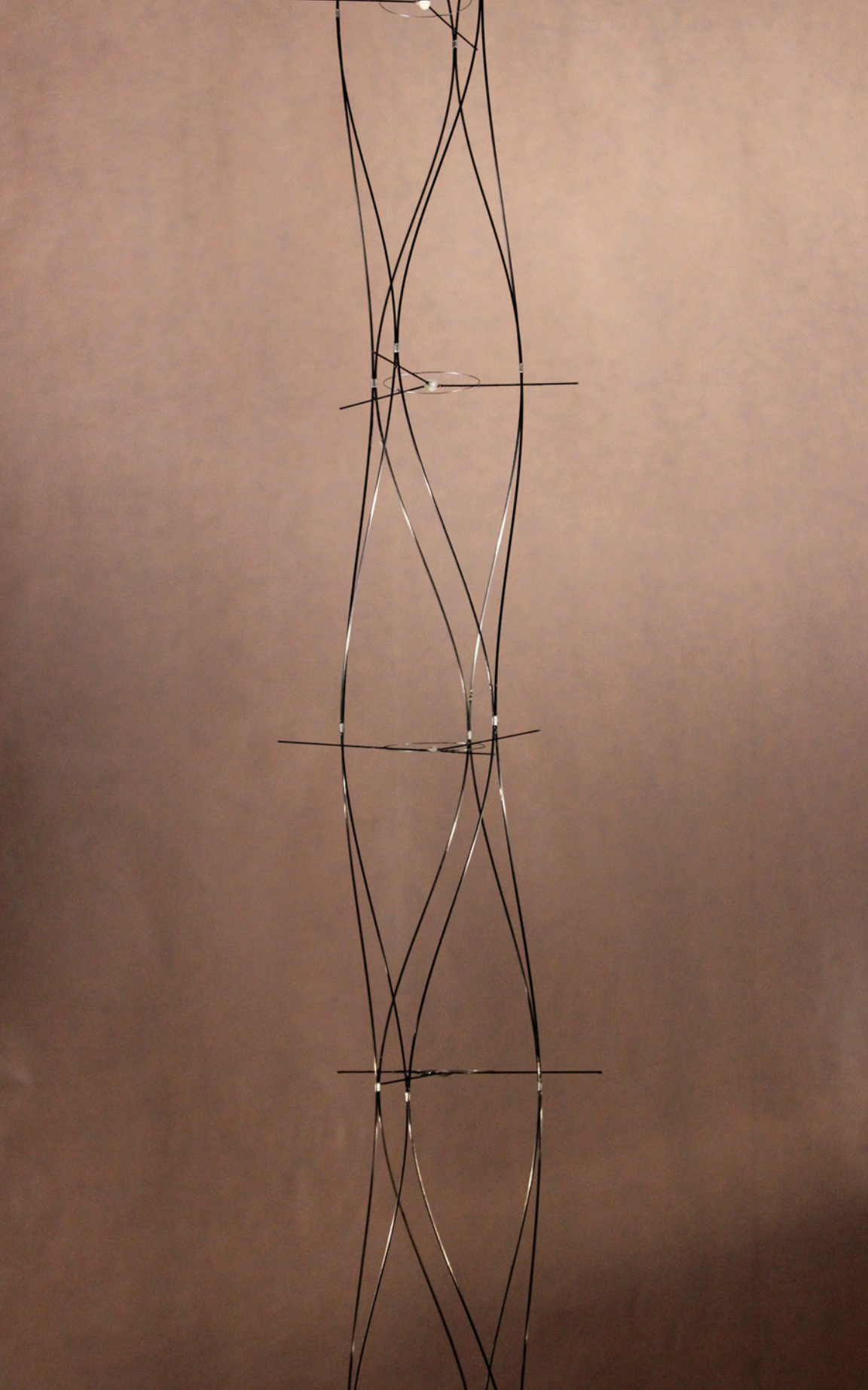


Bill Smith | Beyond the Humanities

march 7 — september 15, 2013





## Bill Smith Beyond the Humanities

Bill Smith's art emerges from an analysis of our increasingly technologically advanced society and our shrinking natural world. With a background in sculpture, microbiology, chemistry, and mechanics, Smith creates art inspired by disciplines outside of the humanities where the aesthetic beauty of Smith's creations is a byproduct of his process. By understanding the way nature works on a microcosmic level, he mimics nature's growth characteristics and inherent beauty. Smith sees the celebration of the human condition as being overrepresented in contemporary art and believes that, by focusing on the universe at large, art can attain a broader significance.

*Beyond the Humanities* explores how rules guide the creation of our world's structure and behavior. Rules are basic to existence and are the foundation from which complexity grows and beauty is manifested. Through this collection of sculptures and videos, Smith challenges the viewers to ponder their future and experience nature's complexity by looking at its patterns and interactions.

*structure* (detail), 2013. multimedia, 3 x 3 x 240 inches.  
Courtesy of the artist.

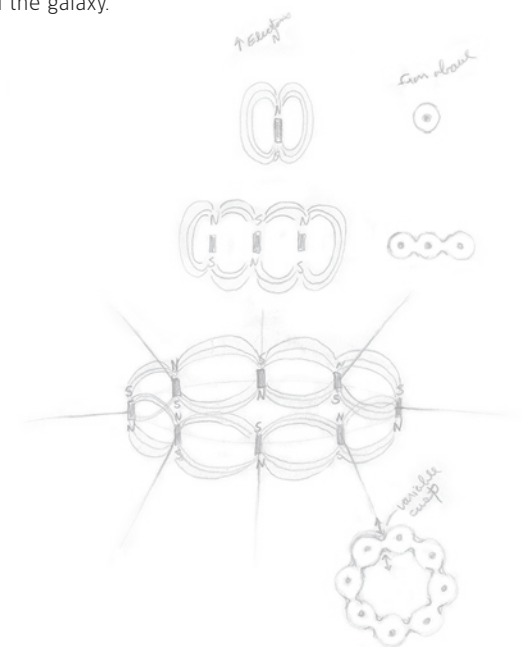




Like Smith's work, chess is defined by rules, patterns, and interactions. The rules of a game are analogous to the laws of nature. Both games and nature are systems made up of rules within which players, planets, species or individuals must function. The more efficient the players are at "using" the rules, the more successful they will become.

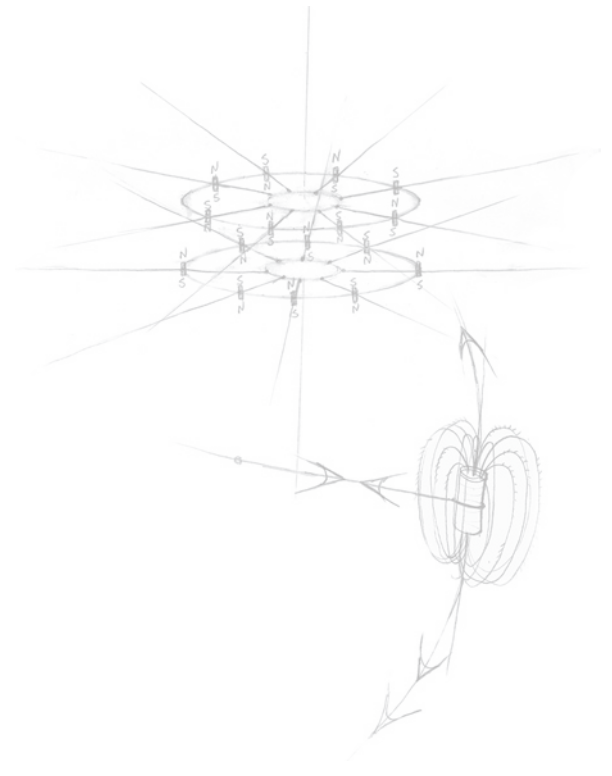
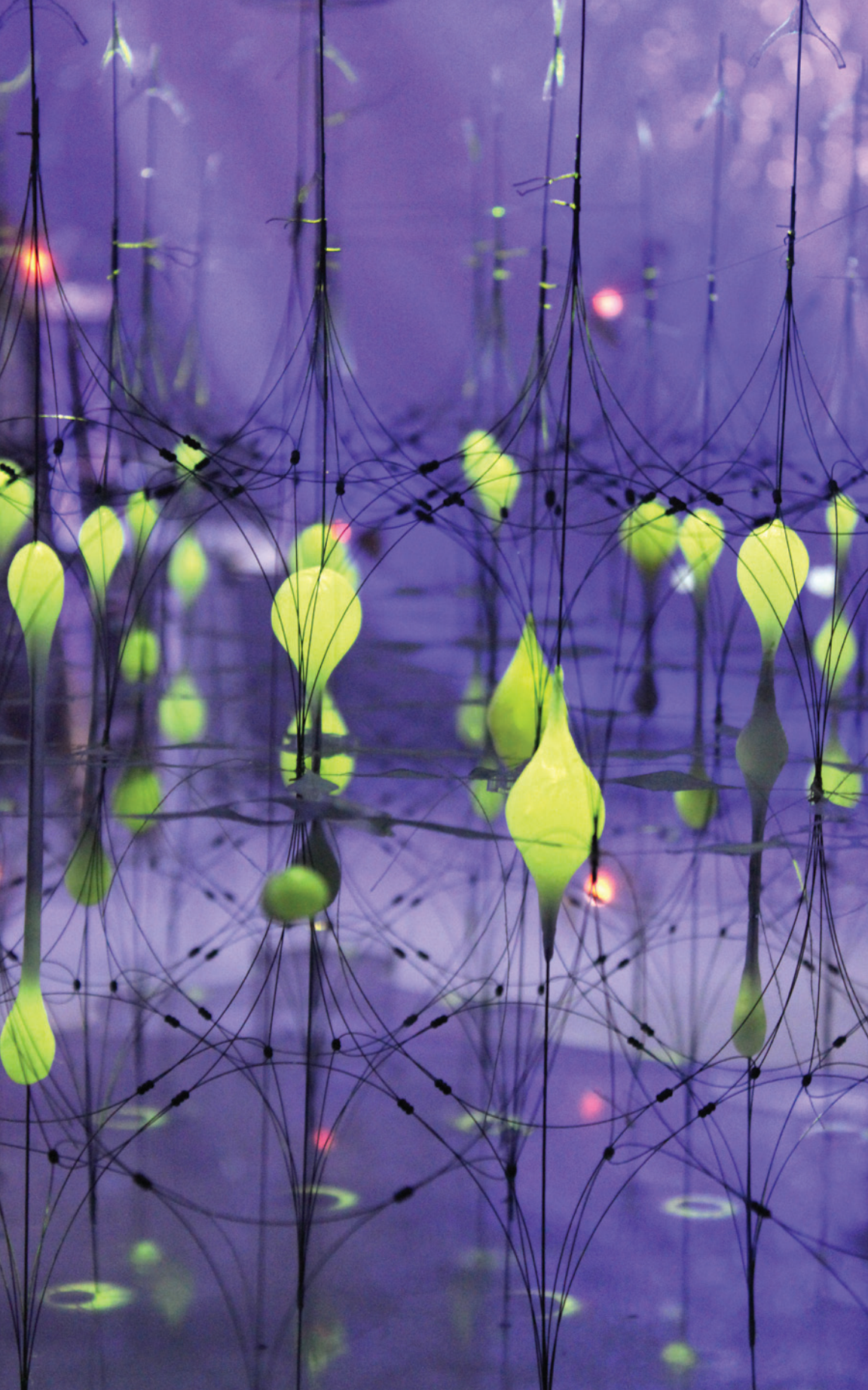
The rules of chess were elegantly constructed to create an environment in which elements struggle and interact. This microcosm has a special kinship with the dynamics seen in social animal behavior—especially those of humans, hornets, and wolves. Animals try to gain supremacy over sister groups of the same species—hive parasitizes hive; pack attacks pack; humans go to war. Chess can be seen as a game inspired by the reality of intra-species conflict—the opposing sides, identical except for color, battle to dominate the shared territory of the game board and ultimately destroy the enemy.

In order to highlight the intersection of art, chess, and nature, Smith uses art to show the underlying similarities of all things. His videos and constructions give a holistic view of the world by presenting the ubiquitous patterns and interactions common to music, games, technology, animals, molecules, and the galaxy.



*spherodendron* (detail), 2010. multimedia, 84 x 84 x 84 inches.  
Courtesy of the artist.





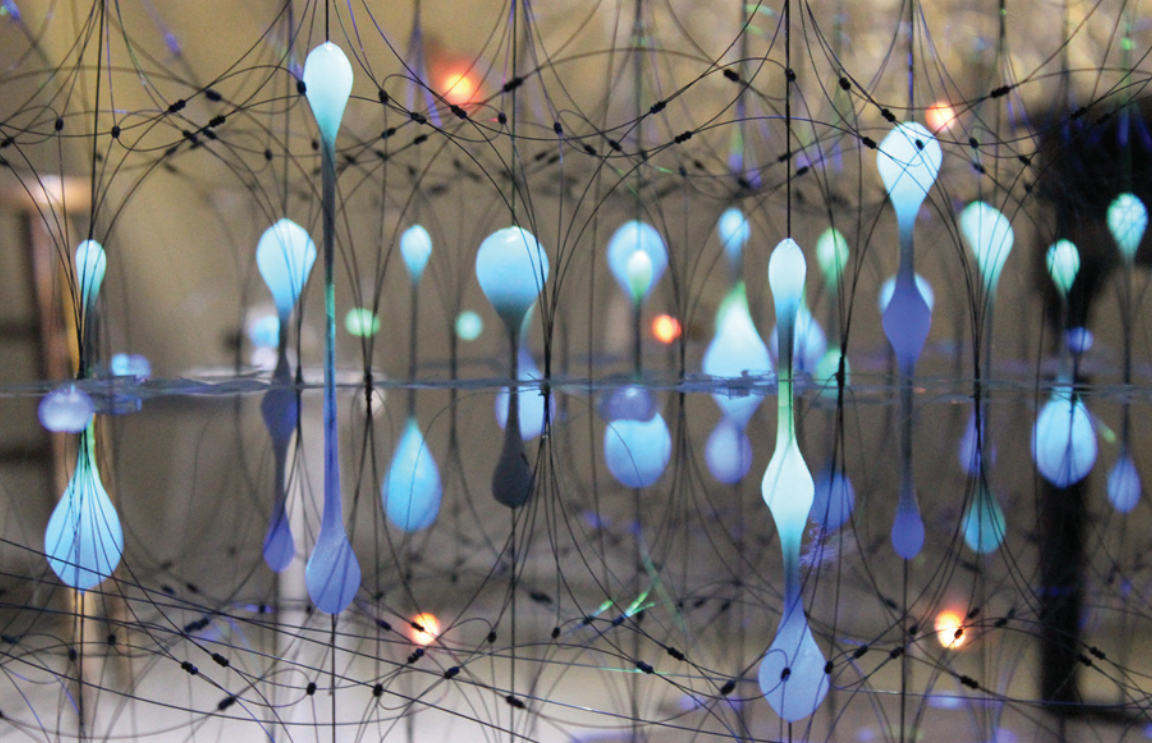
Bill Smith lives and works in southern Illinois and is represented by P.P.O.W Gallery, New York. He received a certificate in mechanics from Ranken Technical Institute, a Bachelor of Science degree in Microbiology and Chemistry from Southern Illinois University, and a Master of Fine Arts degree in Sculpture from the University of Illinois, Champaign-Urbana.

---

*Smith's work has been featured in several solo exhibitions including: P.P.O.W Gallery, New York (2012, 2009, 2007); Saint Louis Art Museum (2008); Gallery 210, Saint Louis (2007); White Flag Projects, Saint Louis (2006); and Chicago Cultural Center (2005). His work has been shown in numerous group exhibitions throughout North America including: Richard Heller Gallery, Santa Monica (2012); SEVEN, Miami (2011); New Museum, New York (2011); Fabric Workshop and Museum, Philadelphia (2010, 2009); PULSE, New York (2010, 2007); PULSE, Miami (2010, 2007); Biennale de Montréal (2007); Parisian Laundry, Montreal (2006); Toronto Alternative Art Fair International (2005); Stray Show, Chicago (2005); Gallery 312, Chicago (2004); and Illinois State Museum, Springfield (2004). Bill has been awarded grants from the Nimoy Foundation (2008), National Endowment for the Arts (2009), and the Warhol Foundation (2010).*

*graphyne (detail), 2012. multimedia, 36 x 36 x 36 inches.  
Courtesy of the artist.*





# Bill Smith Beyond the Humanities

March 7, 2013 – September 15, 2013

Curated and organized by the  
World Chess Hall of Fame.

Related programming and a downloadable  
pdf of this brochure can be found at  
[www.worldchesshof.org](http://www.worldchesshof.org).

## WORLD CHESS HALL OF FAME

Director: Susan Barrett  
4652 Maryland Avenue  
Saint Louis, MO 63108  
(314) 367-WCHF (9243)

Copyright World Chess Hall of Fame  
Design and photographs by Paige Pedersen  
Printed on Recycled Paper

Facebook – World Chess Hall of Fame  
Twitter – @WorldChessHOF  
Instagram – WorldChessHOF  
Flickr – [www.flickr.com/photos/worldchesshof](http://www.flickr.com/photos/worldchesshof)

Advertisement images courtesy of  
World Chess Hall of Fame

Cover Image:  
Bill Smith, *spherodendron*, 2010.  
Multimedia, 84 x 84 x 84 inches.  
Courtesy of the artist.  
Image courtesy of the artist & P.P.O.W Gallery, NY.

WORLD  CHESS  
HALL OF FAME

 Missouri  
Arts Council